

PCBA Electronic
Manufacturing Services with
Best Quality Assurance



+91-6352559457



info@saicaelectronics.com



www.saicaelectronics.com



**282/1/8, GIDC, Makarpura, Vadodara-
390010, Gujarat, India.**



About Us

SAICA Electronics is a Service provider of all types of PCBA electronic Manufacturing. Using the very latest electronics manufacturing methodologies, Saica Electronics provides flexible turnkey assembly solutions to niche and high-reliability sectors.

The majority of Saica Electronics work is Surface Mount Technology (SMT). However, we also cater to customers who require conventional electronic assemblies or plated thru Hole Technology (PTH). Due to this need, we utilize the latest machinery of wave soldering for RoHS compliance products supported with our Blundell Crop-matic, we are able to produce PTH PCBs with varying lead lengths to suit customer requirements.

Why Choose Us



Best Quality Assurance



Low Cost Solution



On time delivery



In-house facilities



Best Customer Support

Engineering is key to every opportunity that presents itself to Saica Electronics Having a multi-skilled and flexible engineering team from the top-down has proven best in our class for technology & electronic manufacturing practices, ensuring a clear route to market & our quality of the finished product is “Our Best Business Plan”.

Tried and Trusted

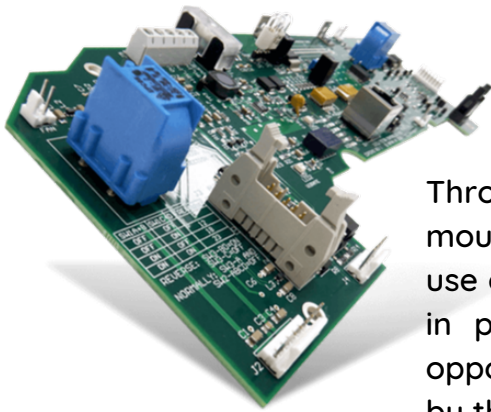
Saica Electronics believe that conventional PCB (Printed Circuit Board) Assembly, while dated, will never be replaced entirely by Surface Mount Technology. We offer the alternative assembly solution as it is the tried and trusted method for many electronic engineers and industries.





Our Products

1 Through-hole Printed Circuit Board Assembly



Through-hole technology (also spelled "thru-hole"), refers to the mounting scheme used for electronic components that involve the use of leads on the components that are inserted into holes drilled in printed circuit boards (PCB) and soldered to pads on the opposite side either by the manual assembly (hand placement) or by the use of automated insertion mount machines.

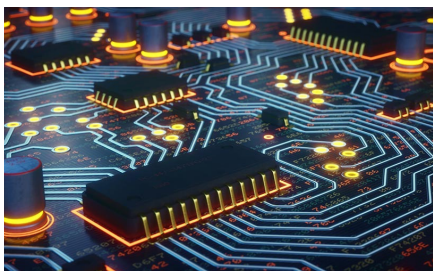
2 Surface Mount Technology PCB Assembly



Surface Mount Assembly Using Machinery (pick and place machine) Use of led or through-hole parts has become rarer and is now discouraged by assemblers. It is far more efficient to machine assemble an electronic circuit if it is completely populated with surface-mounted components.

Leaded parts are laborious to fit. They need lead trimming and bending, hand placement, further trimming, and hand soldering. SMD parts are simply machine picked and placed from a reel. Parts such as connectors that have not been available in SMD form can now be machine placed.

3 Printed Circuit Board PCB Assembly

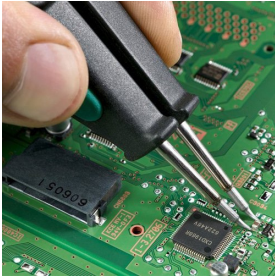


The electrical connection from a PCB pad through to the internal lead frame of a surface mount IC can be verified by injecting a low-power RF signal into the PCB pad and detecting the signal through a machine-driven moveable miniature aerial placed over the surface of the body of the IC.





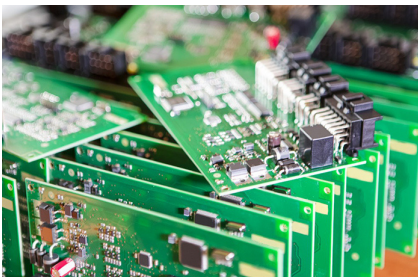
4 Prototype PCB Assembly



We specialize in prototyping and small-volume production, making Saica Electronics the one-stop destination of boards fabrication and assembly. This arrangement makes your R&D work easy and time-saving.

Our professional engineers and technicians will work closely with you through our customer service people to ensure the best quality and quickest possible lead time. We have established us as the leading supplier of PCB and PCBA services for our consistent quality and excellent services.

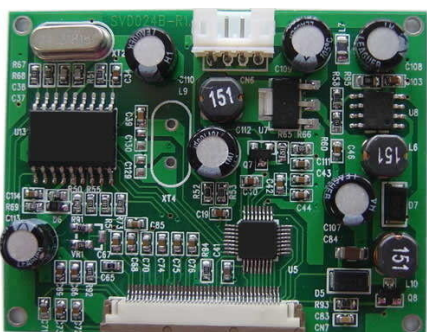
5 Turnkey PCB Assembly



Turnkey refers to a product or service that is ready for immediate use for the buyer and when applied to PCB assembly, this means that the supplier will handle all aspects of the PCB project. This includes the procurement of parts, components and the manufacturing of PCB.

This includes the procurement of parts, components and the manufacturing of PCB. Turnkey PCB assembly uses an internet cloud-based software and PCB manufacturers to develop printed circuit boards quickly, efficiently and cost-effectively for small businesses.

6 Mixed Technology PCB Assembly



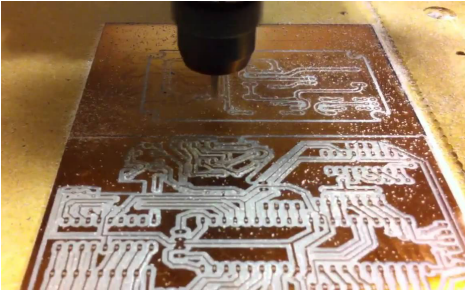
The mixed technology PCB assembly has the properties of both surface mount technology (SMT), and through-hole technology, hence the name. Thus, these assemblies are most commonly used in applications, which require the combination of both through-hole and SMT assemblies.

This type of PCB assembly does not use any solder paste. Saica Electronic is one of the most experienced and reliable Service Provider of these assemblies in India. We have the capability to manufacture circuit boards with single-sided, double-sided, as well as multilayer mixed technology.



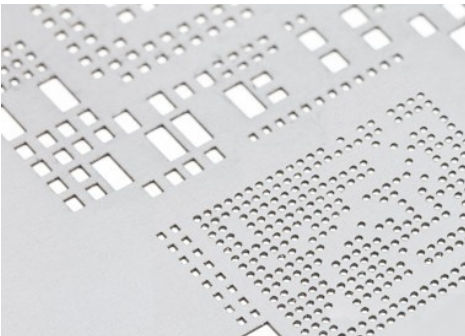


7 PCB fabrication



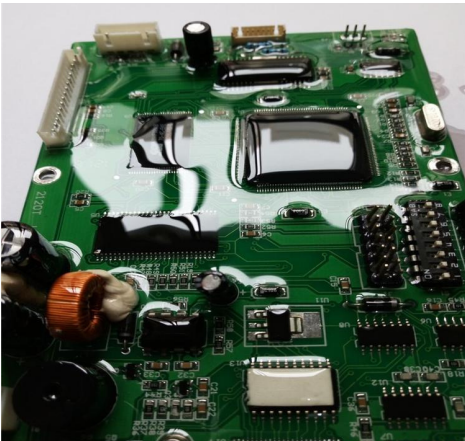
PCB fabrication is the process or procedure that transforms a circuit board design into a physical structure based upon the specifications provided. To meet quality commitments, we have entered into a 100% technology tie-up with one of the reputed hi-tech PCB manufacturer in India.

8 PCB Stencil



A PCB Stencil is a sheet of stainless steel with laser-cut openings used to place solder paste on a PCB board for surface mount component placement. The PCB stencil is used to deposit solder paste on designated places on a bare PCB board so that components can be placed and perfectly aligned on the board.

9 Conformal Coating

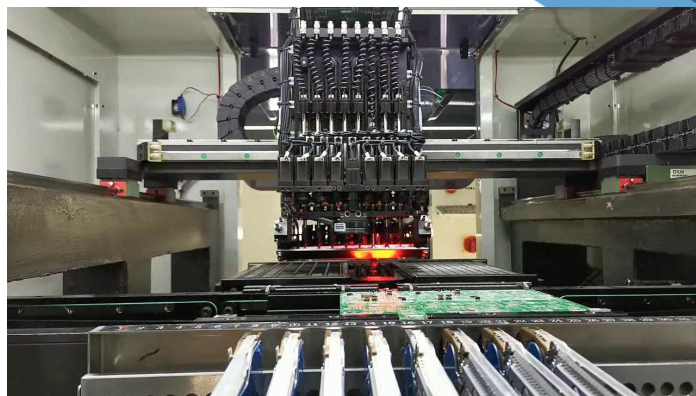
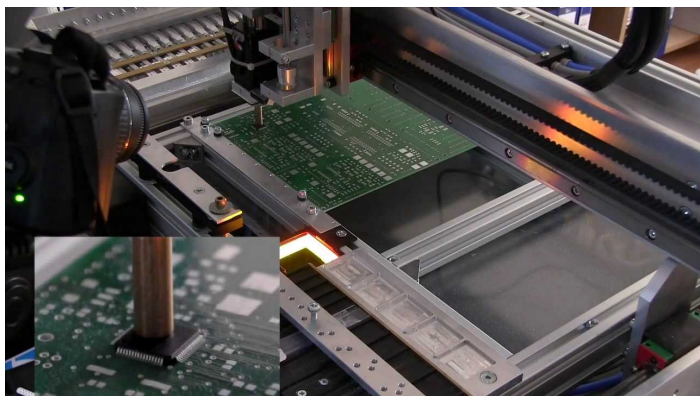


The conformal coating material is a thin polymeric film that conforms to the contours of a printed circuit board to protect the board's components. Typically applied at 25-250 μm thickness, it is applied to electronic circuitry to protect against moisture, dust, chemicals, and temperature extremes.





Our Machinery



SMT Machine

- Stencil printer
- Multi-head pick and place SMT Line
- Applicable Components:0402, 0606, 0805, SOP8, QFN
- Components Supply:Tape reel, Bulk package (IC)Tube
- Tape width:8mm,12mm,16mm,24mm
- Placement head:4
- Visual Camera:6x HD CCD Camera
- Visual Camera (Down):Automatic identify the mark point
- Visual Camera (Up):Automatic adjust the offset
- Max applicable PCB:340*340mm
- Multi-zone, Infrared Reflow Oven
- Inspection system :Magnifying glass, Temperature controlled solder iron .
- Materials :Alpha solder paste and Wire,PAI-815 Flux.

